

Hose Tap Ball Valves, HTBVB, HTBVC, RWHTBV

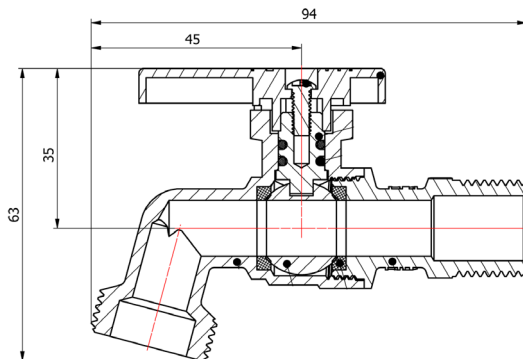
The HTBV range is available in 15mm male connection with 20mm male outlet. Hose Tap Extensions are also available.

The HTBV range is available in Chrome, Brass and Lilac for recycled water.

Must be fitted in accordance with AS3500.1 and by a licensed plumber. Install valve with direction of flow as indicated by arrow on valve body.

Valve suitable for horizontal or vertical installation. Flush plumbing before connection. Ensure knob is easily accessible.

HTBV DIMENSIONS



HTEB-15

**HTBVB-15
BRASS HOSE
TAP VALVE**

- MAX. TEMP. 85°C
- MAX. PRESSURE 1600KPA

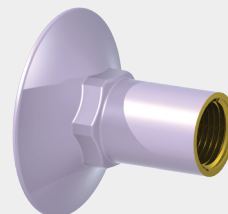


HTEC-15



**HTBVC-15
CHROME HOSE
TAP VALVE**

- MAX. TEMP. 85°C
- MAX. PRESSURE 1600KPA



HTEL-15



**RWHTBV-15
LILAC RECYCLED
WATER HOSE TAP VALVE**

- VANDAL PROOF HANDLE
- INC. "DO NOT DRINK" SIGN
- MAX. PRESSURE 1600KPA

| MODEL NO. | DN SIZE | DESCRIPTION | O/RALL LENGTH |
|-----------|---------|----------------------------|---------------|
| HTBVB-15 | 15 | 15mm Brass Hose Tap Valve | 94mm |
| HTBVC-15 | 15 | 15mm Chrome Hose Tap Valve | 94mm |
| RWHTBV-15 | 15 | 15mm Lilac Hose Tap Valve | 94mm |
| HTEB-15 | 15 | 15mm Brass Hose Tap Ext. | 50mm |
| HTEC-15 | 15 | 15mm Chrome Hose Tap Ext. | 50mm |
| HTEL-15 | 15 | 15mm Lilac Hose Tap Ext. | 50mm |

DISCLAIMER: Every care has been taken in the preparation of these instructions, which have been issued as a guide only. Compliance with the requirements of local Authorities is required at all times. These requirements may change from time to time. Always be aware of the local requirements. Subject to any statutory obligations and manufacturers warranties no liability can be accepted for any losses, consequential or otherwise which may arise or be said to have arisen from relying upon the contents of this installation instruction as to the fitness of any particular product for any particular purpose, use or application. The Australian Valve Group Pty Ltd reserves the right to modify designs and specifications and to withdraw and introduce products at any time without notice.