

## Series SCDAT

### Single Check Detector Assembly (Testable)

#### Size: DN80-DN200

The units are testable and designed for installation on potable water connections in fire system applications and protect against both back siphonage and backpressure of polluted water into the potable water supply. Available in flanged and grooved configuration.

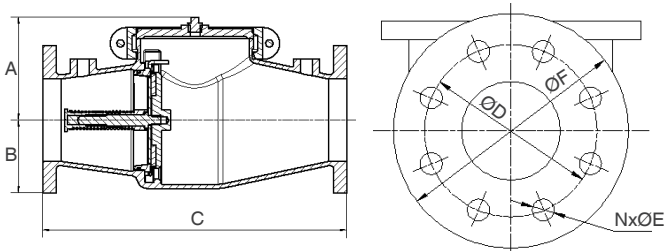
#### Features

The devices are constructed from ductile iron and consist of one spring-loaded, center stem, guided check valve, with two BSP tapped holes located one upstream and one downstream of the check valve for installation of a by-pass assembly. Bypass includes a dual check valve, shutoff valves and/or water meter for the detection of low flow. For ease of servicing the devices have a single top access cover utilizing a grooved pipe coupling and the check valve assembly is replaceable.

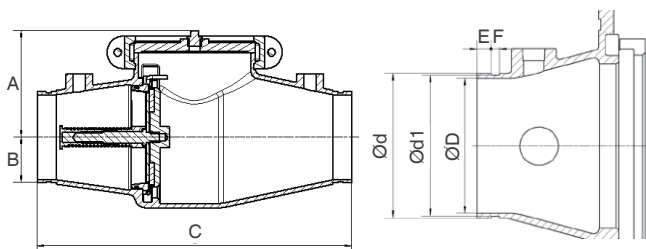
#### Pressure-Temperature

- Max. Working Pressure: 1200 KPa
- Max. Working Temperature: 60°C

#### Installation Dimensions



Size mm   In.	Type	A	B	C	ØD	ØF	NxØE	Weight (Kg)
80   3	Flanged	127	85.7	406.4	146.1	185	4-Ø18	24
100   4	Flanged	150	107.95	419.1	177.8	215.9	8-Ø18	29
150   6	Flanged	193	139.7	571.5	235	279.4	8-Ø22	54
200   8	Flanged	226	168.3	698.5	292.1	333.5	8-Ø23	96



Size mm   In.	Type	A	B	C	Ød	ØD	Ød1	E	F	Weight (Kg)
80   3	Grooved	127	85.7	406.4	88.9	76.2	84.7	15.9	7.9	18.5
100   4	Grooved	150	87.15	419.1	114.3	103.1	109.8	15.9	9.5	19
150   6	Grooved	193	82.55	571.5	165.1	154.0	160.8	15.9	9.5	41
200   8	Grooved	236	109.55	673.1	219.1	202.4	214.4	19.1	11.1	84



#### Specification

- Standard: AS/NZS 2845.1
- Test Pressure: 2400 KPa
- End Connection Options: Grooved: (cut for steel pipe)  
AWWA C606  
Flanged: AS 2129-2000
- Working Medium: Non corrosive liquids

#### Approvals

- WaterMark License No.: WMK25866



#### Material

Component	Material
Body	Ductile Iron
Access Cover	Ductile Iron
Polymers	NorylTM, NSF Listed
Elastomers	Silicone, Buna-N
Springs	Stainless Steel
CV Disc	Bronze
Coating	FDA Approved Fusion Epoxy

#### Typical Installation

Model SCDAT Single Check Detector Assembly (Testable) should be installed with adequate clearance and easy accessibility for testing and maintenance and must be protected from freezing. Local codes shall govern installation requirements.

Fittings such as end connectors intended to join alternative pipe systems made from other materials (e.g. plastics) shall also conform to the relevant dimensional and performance requirements of the appropriate Australian, New Zealand, or joint Australian/New Zealand Standard for the alternative pipe system.

Test the assembly at initial installation, after servicing or maintenance to AS/NZS2845.3 and local regulatory authority requirements.