

Series H-W7000

H-W7000-EN-202509

Stainless Steel Butterfly Valve

Size: DN15-DN200

H-W7000 series stainless steel butterfly valve is designed for isolation service in the pipeline. With welding and clamp connection types available for selection, the product is suitable for use in the fields of liquid cooling and industrial application.

Features

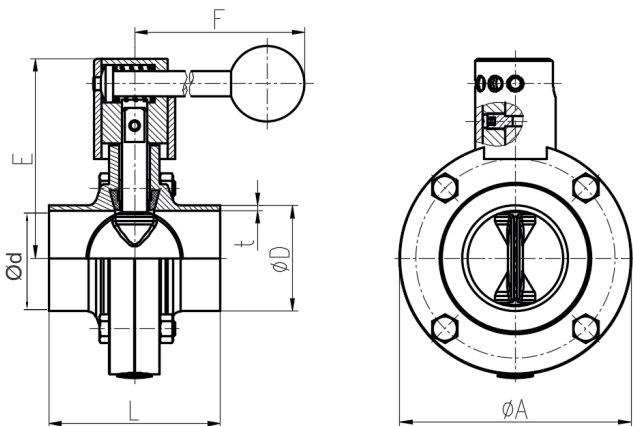
- Low resistance
- Convenient maintenance
- Low operation torque
- De-oiling and de-greasing

Materials

No.	Part	Material
1	Dust cover	PE
2	Bolt	SS304/316L
3	Nut	SS304
4	Body	SS304/316L
5	Disc	SS304/316L
6	Seat	EPDM (Peroxide Cured)
7	Bushing	PA66
8	Rotator	SS304
9	Spring	SS304
10	Sleeve	SS304
11	Handle	SS304

*Custom material configurations available upon request. Please contact us for details.

Installation Dimensions



AS1528.1-Weld-2 piece

Type	Size	ØD	t	E	F	L	ØA	Ød
W7600	DN20	19.05	1.6	69	125	44	69	15.85
	DN25	25.40	1.6	69	125	44	69	22.20
	DN32	31.75	1.6	73	125	44	76	28.55
	DN40	38.10	1.6	75	125	44	82	34.90
	DN50	50.80	1.6	84	125	50	98	47.60
	DN65	63.50	2.0	91	125	50	113	59.50
	DN80	76.20	2.0	97	160	56	125	72.20
	DN100	101.60	2.0	112	160	60	155	97.60
	DN125	127.00	2.0	130	180	70	185	123.00
	DN150	152.40	2.0	145	190	80	216	148.40
DN200	203.20	2.0	197	295	80	284	199.20	

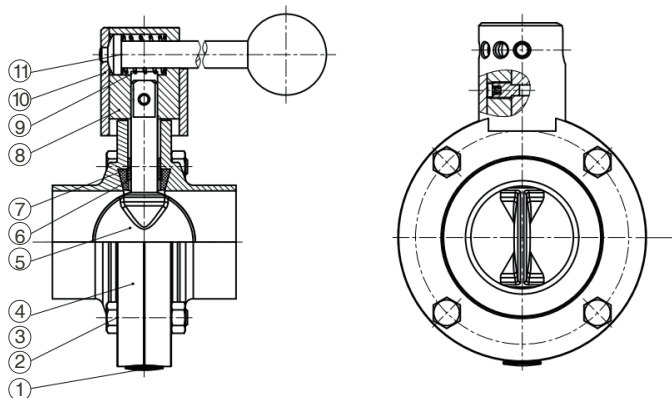


Welding

Clamp

Pressure-Temperature

- Nominal pressure: PN10
- Temperature range: -10°C-100°C
- Connection standard: Welding: AS1528.1
Clamp: AS1528.4
- Test standard: GB/T 13927
- Suitable media: Water, oil, ≤50% ethylene glycol/propylene glycol solution

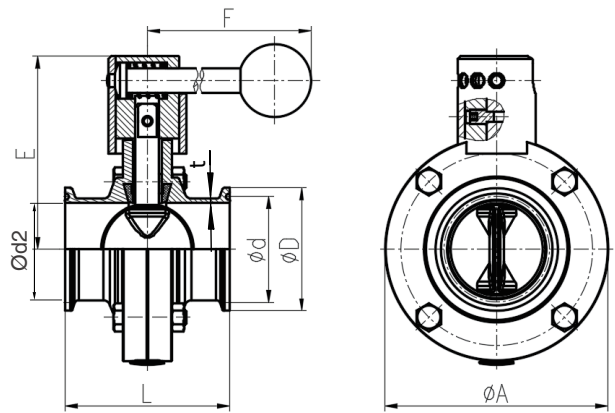


Watts reserves the right to change or modify product design, construction, specifications, or materials without prior notice and without incurring any obligation to make such changes and modifications on Watts products previously or subsequently sold.



AS1528.4-clamp-2 piece

Type	DN	ØD	Ød	E	F	L	ØA	Ød2	t
W7800	DN15	25.1	20.30	69	125	66	69	9.50	1.6
	DN20	25.1	20.30	69	125	66	69	15.85	1.6
	DN25	50.5	43.50	69	125	66	69	22.20	1.6
	DN32	50.5	43.50	73	125	66	76	28.55	1.6
	DN40	50.5	43.50	76	125	68	82	34.90	1.6
	DN50	64.0	56.50	84	125	70	98	47.60	1.6
	DN65	77.5	70.50	94	125	70	118	60.30	1.6
	DN80	91.0	83.50	102	160	90	134	73.00	1.6
	DN100	119.0	110.00	112	160	94	155	98.40	1.6
	DN150	166.8	156.36	145	190	100	216	149.20	1.6
DN200	217.7	207.16	197	295	100	284	199.20	2.0	



Note: *The dimension conforms to the common used standard in Australia.
Confirm whether or not the dimensions of the provided clamp ring is consistent with this.

AS1528.1-Weld-3 piece

Type	SIZE	ØD	t	E	F	L	ØA	Ød
W7300	DN25	25.40	1.6	80	125	88	69	22.20
	DN32	31.80	1.6	84	125	88	76	28.55
	DN40	38.10	1.6	87	125	92	82	34.90
	DN50	50.80	1.6	95	125	92	98	47.60
	DN65	63.50	2	103	125	94	113	59.50
	DN80	76.20	2	108	150	104	125	72.20
	DN100	101.60	2	122	150	104	155	97.60
	DN125	127.00	2	148.5	170	120	185	123.00
	DN150	152.40	2	165.5	220	120	217	148.40
	DN200	203.20	2	198.7	295	120	284	199.20

