

Series H-W6000

H-W6000-EN-202509

Stainless Steel Three-Piece Ball Valve

Size: DN15-DN100

H-W6000 series stainless steel three-piece ball valve is designed for isolation service in the pipeline. With welding and clamp connection types available for selection, the product is suitable for use in the fields of liquid cooling and industrial application.

Features

- Low resistance
- Convenient maintenance
- Low operation torque

Pressure-Temperature

- Nominal pressure: PN16(DN15-50) PN10(DN65-100)
- Temperature range: -10°C-100°C
- Connection standard: Welding: AS1528.1
Clamp: AS1528.4
- Test standard: GB/T 13927
- Suitable media: Water, oil, ≤50% ethylene glycol/propylene glycol solution

Materials

No.	Part	Material
1	Bonnet	Stainless Steel 304/316L
2	Bolt, spring washer, nut	Stainless Steel 304
3	Body	Stainless Steel 304/316L
4	Seat	PTFE
5	Ball	Stainless Steel 304/316L
6	Stem	Stainless Steel 304/316L
7	Washer	PTFE
8	Filler	PTFE
9	Gland	Stainless Steel 304
10	Handle	Stainless Steel 304
11	Nut, spring washer	Stainless Steel 304

*Custom material configurations available upon request. Please contact us for details.

Installation Dimensions

AS1528.4 Tri-clamp

Type	DN	ØD	Ød1	L	H	A	W	Ød2	t
W6800	DN15	25.1	20.3	97	51	49	106	9.50	1.6
	DN20	25.1	20.3	108	59	56	113	15.85	1.6
	DN25	50.5	43.5	112	64	60	128	22.20	1.6
	DN32	50.5	43.5	126	73	68	144	28.55	1.6
	DN40	50.5	43.5	140	87	80	163	34.90	1.6
	DN50	64.0	56.5	156	95	91	175	47.60	1.6
	DN65	77.5	70.5	180	119	117	219	60.30	1.6
	DN80	91.0	83.5	206	131	137	229	73.00	1.6
	DN100	119.0	110.0	250	177	172	290	98.40	1.6

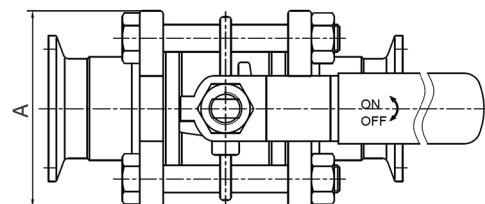
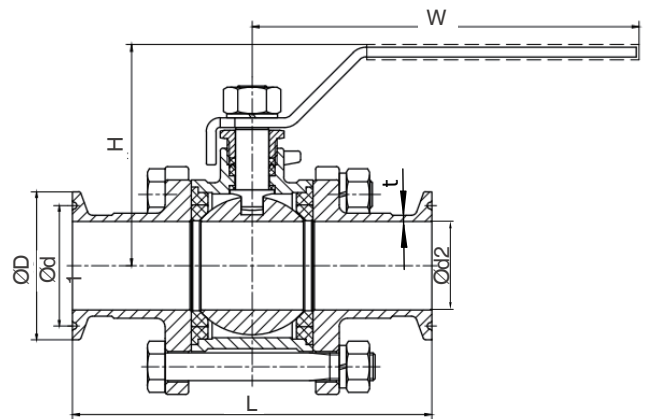
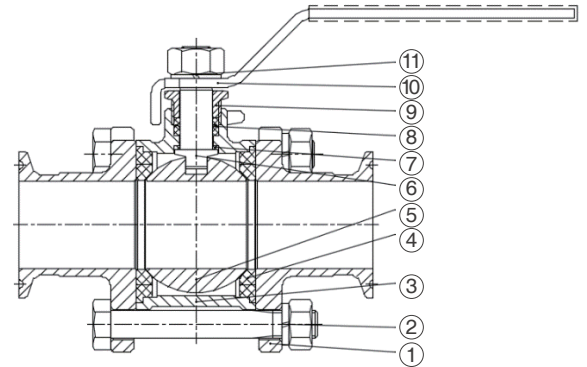
*Contact us for other clamp sizes



Welding



Clamp



Watts reserves the right to change or modify product design, construction, specifications, or materials without prior notice and without incurring any obligation to make such changes and modifications on Watts products previously or subsequently sold.



AS1528.1-Weld

Type	Size	ØD	t	L	H	A	W	Ød
W6600	DN15	12.70	1.6	72	51	49	106	9.50
	DN20	19.05	1.6	72	51	49	106	15.85
	DN25	25.40	1.6	80	59	56	113	22.20
	DN32	31.75	1.6	90	64	60	128	28.55
	DN40	38.10	1.6	102	73	68	144	34.90
	DN50	50.80	1.6	112	87	80	163	47.60
	DN65	63.50	1.6	138	95	91	175	60.30
	DN80	76.20	2.0	181	119	117	219	72.20
DN100	101.60	2.0	260.5	177	172	290	97.60	

Contact with us for other welding size

